

ALL CIRCUITS ON THIS PAGE ARE PRIMARY REFERENCED UNLESS OTHERWISE NOTED



Miller Electric Mfg. Co.  
Appleton, WI, USA

CONFIDENTIAL

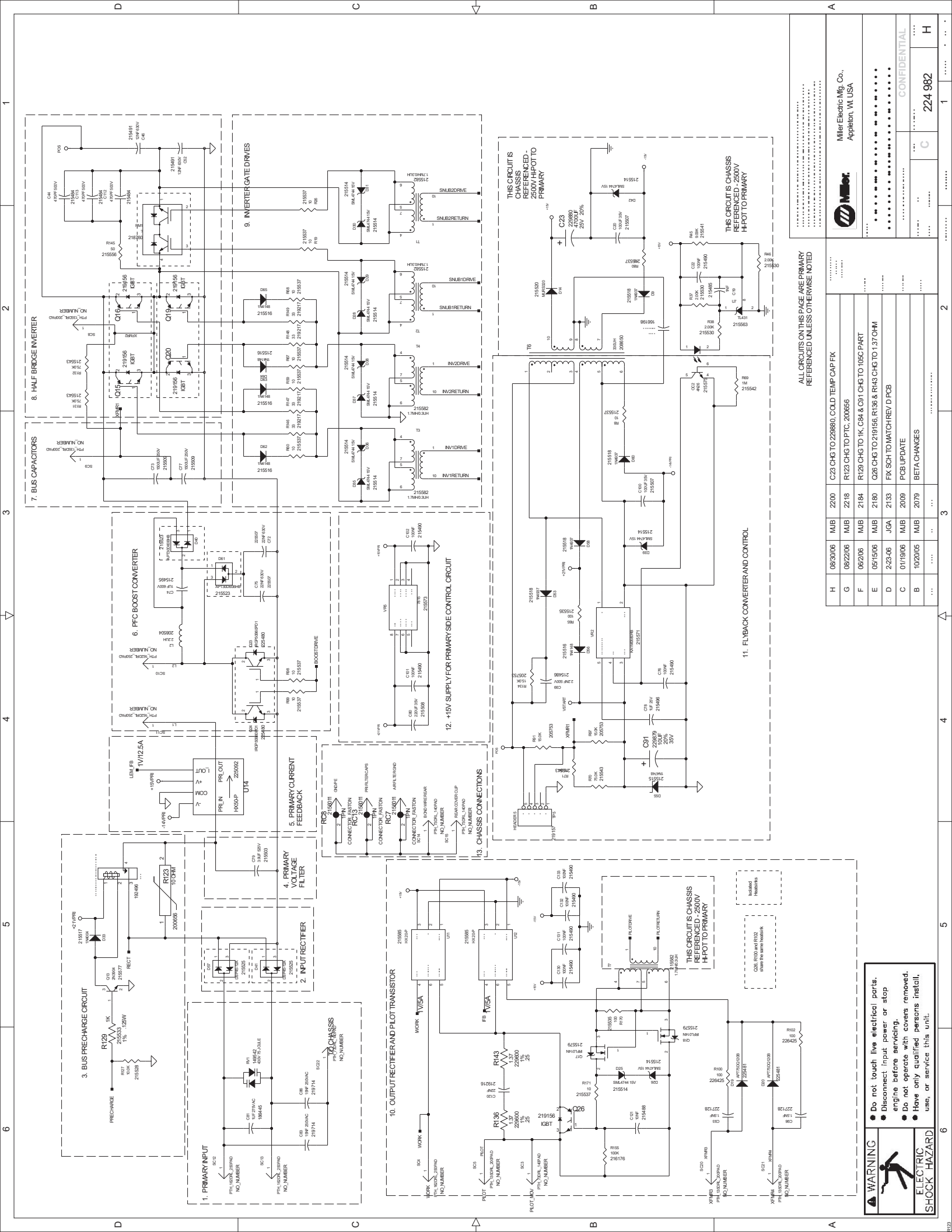
224 982

H	08/20/06	MJB	2200	C23 CHG TO Z298800 COLD TEMP CAP FIX
G	08/22/06	MJB	2218	R123 CHG TO PTC, 200656
F	06/27/06	MJB	2184	R129 CHG TO 1K, C94 & C91 CHG TO 105C PART
E	05/15/06	MJB	2180	Q28 CHG TO 219156 R136 & R143 CHG TO 1.37 OHM
D	2/25/06	JGA	2133	FX SCH TO MATCH REV D PCB
C	01/19/06	MJB	2009	PCB UPDATE
B	10/20/05	MJB	2079	BETA CHANGES

**WARNING**

- Do not touch live electrical parts.
- Disconnect input power or stop engine before servicing.
- Do not operate with covers removed.
- Have only qualified persons install, use, or service this unit.

**ELECTRIC SHOCK HAZARD**

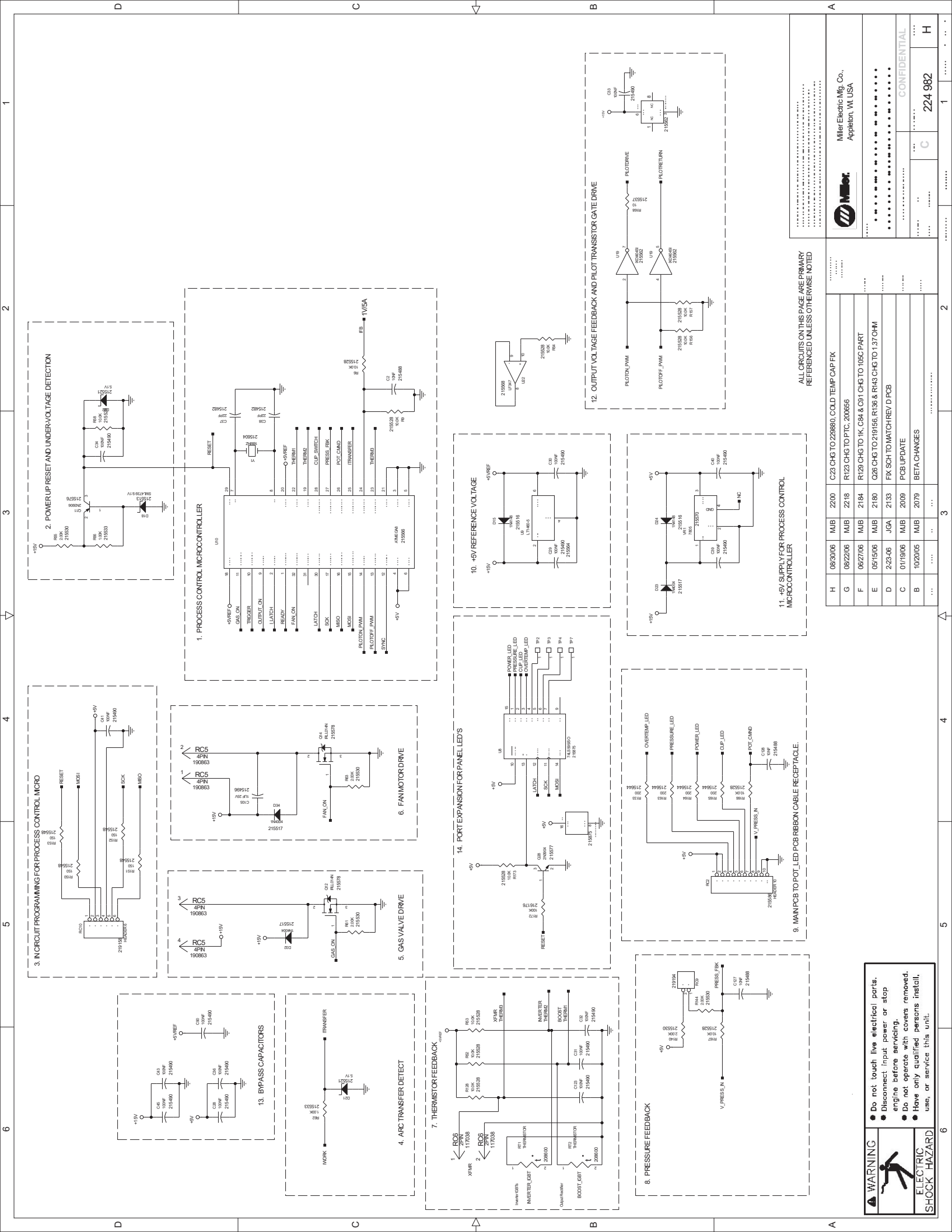


ALL CIRCUITS ON THIS PAGE ARE PRIMARY REFERENCED UNLESS OTHERWISE NOTED

Miller Electric Mfg. Co. Appleton, WI, USA	
CONFIDENTIAL	
C	H
224 982	224 982

H	06/30/06	MJB	2200	C23 CHG TO Z2880, COLD TEMP CAP FIX
G	08/22/06	MJB	2218	R123 CHG TO PTC, 200656
F	06/2/06	MJB	2184	R129 CHG TO 1K, C94 & C91 CHG TO 105C PART
E	05/15/06	MJB	2180	Q28 CHG TO 219156, R136 & R143 CHG TO 1.37 OHM
D	2/25/06	JGA	2133	FX SCH TO MATCH REV D PCB
C	01/19/06	MJB	2009	PCB UPDATE
B	10/20/05	MJB	2079	BETA CHANGES

**WARNING**  
 Do not touch live electrical parts.  
 Disconnect input power or stop engine before servicing.  
 Do not operate with covers removed.  
 Have only qualified persons install, use, or service this unit.  
**SHOCK HAZARD**

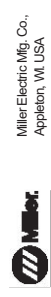


1  
2  
3  
4  
5  
6

D  
C  
B  
A

ALL CIRCUITS ON THIS PAGE ARE PRIMARY REFERENCED UNLESS OTHERWISE NOTED

H	06/30/06	MJB	2200	C23 CHG TO Z29880, COLD TEMP CAP FIX
G	08/22/06	MJB	2218	R123 CHG TO PTC, 200656
F	06/27/06	MJB	2184	R129 CHG TO 1K, C84 & C91 CHG TO 105C PART
E	05/15/06	MJB	2180	Q28 CHG TO 219156, R136 & R143 CHG TO 1.37 OHM
D	2/25/06	JGA	2133	FX SCH TO MATCH REV D PCB
C	01/19/06	MJB	2099	PCB UPDATE
B	10/20/05	MJB	2079	BETA CHANGES
...	...	...	...	...



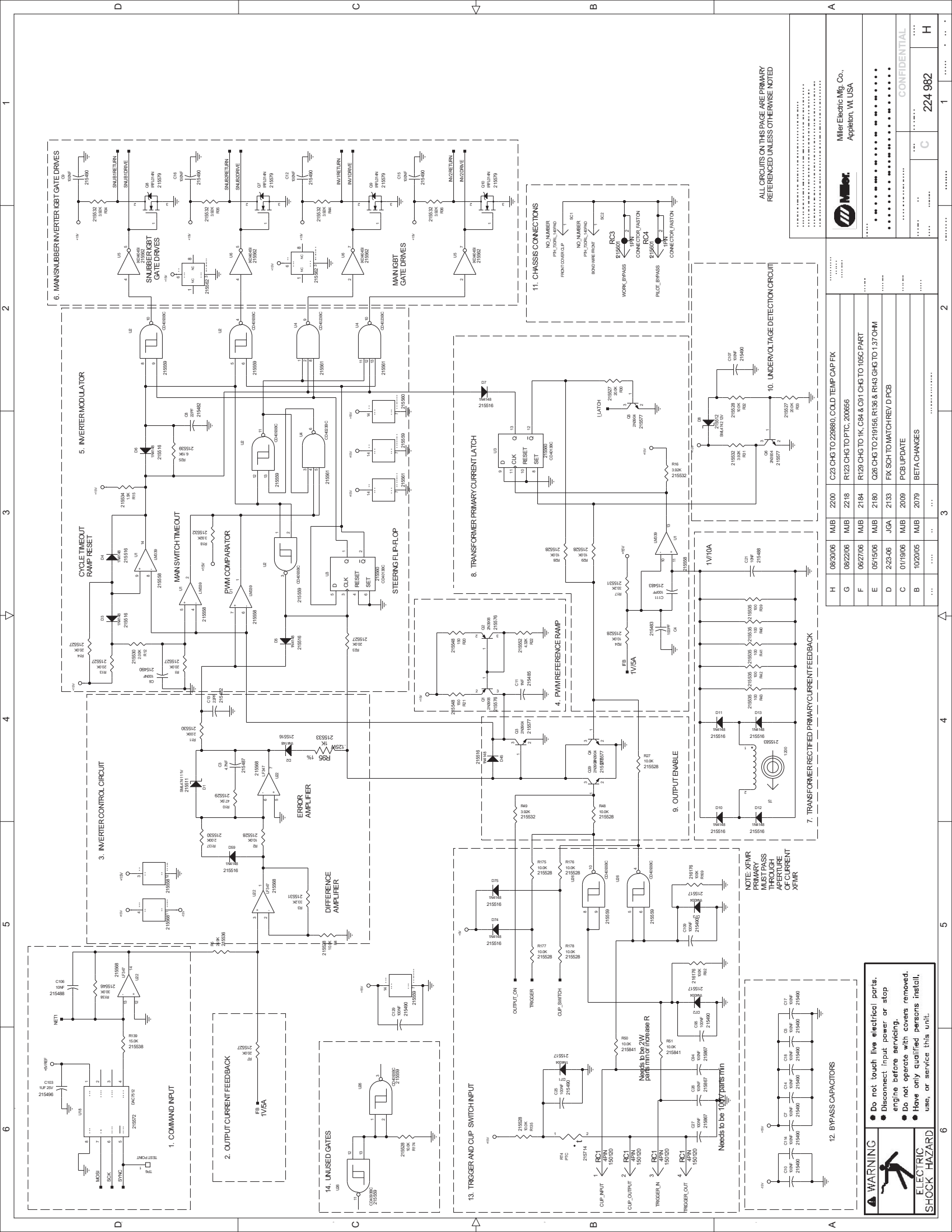
Miller Electric Mfg. Co.  
Appleton, WI, USA

CONFIDENTIAL  
C  
224 982  
H

**WARNING**

- Do not touch live electrical parts.
- Disconnect input power or stop engine before servicing.
- Do not operate with covers removed.
- Have only qualified persons install, use, or service this unit.

**ELECTRIC SHOCK HAZARD**



ALL CIRCUITS ON THIS PAGE ARE PRIMARY REFERENCED UNLESS OTHERWISE NOTED

H	08/30/06	MJB	2200	C23 CHG TO Z28860, COLD TEMP CAP FIX
G	08/22/06	MJB	2218	R123 CHG TO PTC, 200656
F	06/27/06	MJB	2184	R128 CHG TO 1K, C84 & C91 CHG TO 105C PART
E	05/15/06	MJB	2180	Q28 CHG TO 2191566, R136 & R143 GHG TO 1.37 OHM
D	2-25-06	JGA	2133	FX SCH TO MATCH REVD PCB
C	01/19/06	MJB	2009	PCB UPDATE
B	10/20/05	MJB	2079	BETA CHANGES



Miller Electric Mfg. Co.  
Appleton, WI, USA

CONFIDENTIAL  
C  
224 982  
H

**WARNING**

- Do not touch live electrical parts.
- Disconnect input power or stop engine before servicing.
- Do not operate with covers removed.
- Have only qualified persons install, use, or service this unit.

**ELECTRIC SHOCK HAZARD**